

TYPE DESIGNATION

P B R - □ - □ □

• Type of Button

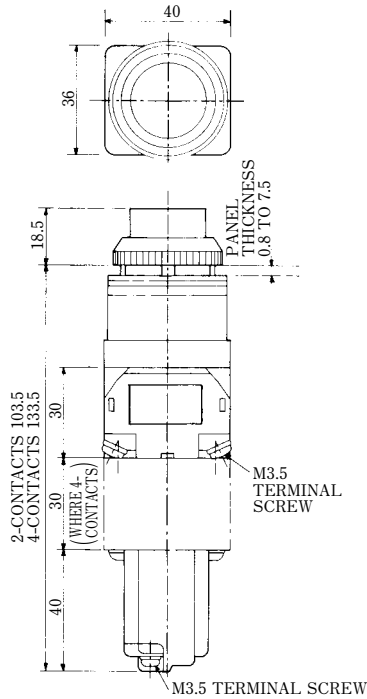
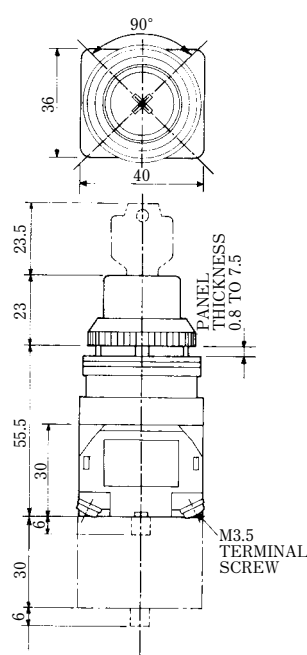
1: Flush
2: Salient
5: Flush Head with Cylinder Lock
7: Half Shrouded
52: Cylinder Lock 2-Position
62: Knob 2-Position

• Contact Arrangement

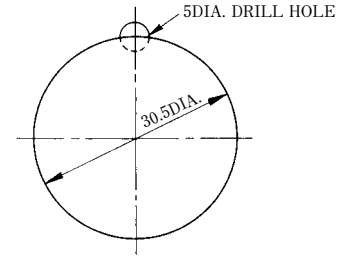
10: 1NO 11: 1NO1NC
20: 2NO 12: 1NO2NC
30: 3NO 13: 1NO3NC
40: 4NO 21: 2NO1NC
01: 1NC 22: 2NO2NC
02: 2NC 31: 3NO1NC
03: 3NC
04: 4NC

MODEL LIST

| Appearance | Operator | Color of Button | Type | Remarks |
|---|--------------------------|--------------------------------------|----------|---------------------------------------|
|  | Flush head | Red Green Black | PBR-1-□ | General Purpose |
|  | Salient head | Red ^{**4} Green Black | PBR-2-□ | General Purpose |
|  | Half shrouded head | Red ^{**4} Green Black | PBR-7-□ | Protection against accidental contact |
|  | Knob 2-position | 〈Knob〉 Black | PBR-62-□ | 1NC Unit 1NO Unit |
|  | Cylinder lock 2-position | 〈Cylinder〉 Chrome plated | PBR-52-□ | 1NC Unit 1NO Unit |

Type PBLR-Type PBR-5-

• DRILLING PLAN FOR MOUNTING HOLE

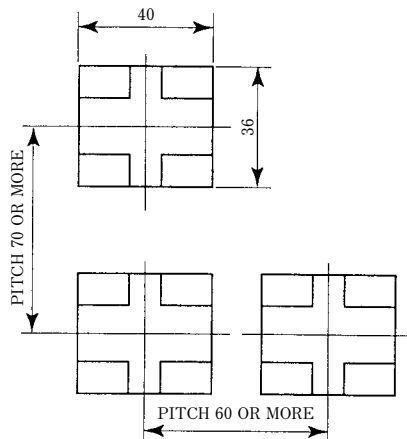


Note: The 5mm hole is used to stop whirl. If nameplates are not used or nameplate does not have any whirl-stop, the hole is not required.

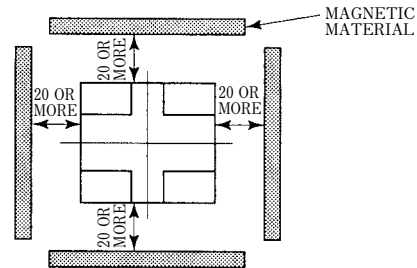
Diameter of Mounting Part: 30mm

• MOUNTING PITCH

• To avoid interference when mounting units in close proximity to one another, refer to the dimensions specified below for proper separation. Units mounted closer together than specified may affect operations and result in unsatisfactory performance.



• Refer to the dimensions specified below for proper mounting and separation from other magnetic materials. Units mounted closer together than specified may affect operations and result in unsatisfactory performance.



● PRECAUTIONS FOR MOUNTING

⚠ CAUTION

- Switch mounting screw torque must be $3.09\text{N} \cdot \text{m}$ ($31.5\text{kgf} \cdot \text{cm}$) $\pm 10\%$.
(Do not tighten screws too firmly to prevent them from damaging.)
- Operate push-buttons in control part at 2.16N (0.22kgf) or less.
(Do not push them too strong to prevent them from damaging.)

⊘ RESTRICTION

- This switch cannot be used where dust and cutting powder are present.
(They might come into gear in the switch and lock it.)

● PRECAUTIONS FOR WIRING

⚠ CAUTION

- Connecting wires must be 2mm^2 or less.
- Terminal screw torque must be $0.65\text{N} \cdot \text{m}$ ($6.5\text{kgf} \cdot \text{cm}$) $\pm 10\%$.
(Do not tighten screws too firmly to prevent them from damaging.)